



Irish Trust Talk

Autumn 2010

No 83

MESSAGE FROM THE CHAIRMAN

You are very welcome to our Autumn edition of Trust Talk. Since our last edition we have had our 2010 pilgrimage to Lourdes with over 1,100 young people and carers travelling from Ireland, we have also had our summer pilgrimage to Hosanna House for 90 friends of the Trust. Both were a huge success and for a change there was more sunshine at Easter than in June.

The summer was over all too quick but thankfully there was more sunshine this year than in the past three years put together! On Saturday 26th June we had a special celebration when Bishop Brennan, Bishop of Ferns, officially opened our new holiday home in Kilrane, Rosslare Harbour, Co. Wexford. It was a wonderful occasion and the sunny South East lived up to its name with a glorious sunny day. I would like to pay a special thanks to all in the South East Region for their enormous efforts in having the house ready for our opening and I would like to say a special thanks to Mary Wade and Maureen Rossiter for their dedication and enthusiasm in having the home looking so lovely.

We have now started our pilgrimage year and are looking forward to Easter 2011 when we will celebrate our 40th journey to Lourdes as part of the HCPT family. I am delighted to tell you that Cardinal Séan Brady has kindly agreed to lead our Pilgrimage which is a great honour for our special anniversary year. With Easter Sunday next year falling on 24th April, it will be one of the latest Easters for many years but we hope that means lovely warm days for everyone to enjoy.

Our year starts off with a Trustees meeting and a Group Leaders meeting which this time was held in Kilrane so that as many of the group leaders as possible could have the opportunity to see the new holiday home. I would encourage everyone to make the journey to Kilrane and to use the facilities either as part of your group or as a family for a weeks holiday or just weekend break. Please tell all your family and friends about it and together we can make it a huge success.

As you may be aware our selection meetings take place in November, so if you know of a young person or adult who would benefit from a trip to Lourdes at Easter or to Hosanna House in June please contact the office for an application form or give the contact details to Maureen or Zoe in the office and they will send out the form for you. As ever, we cannot take the young people to Lourdes unless we have enough money to pay the bills. All the groups are making extra special efforts, particularly in these difficult economic times, to raise as much funds as possible. I would ask all our readers to become involved in a fund raising event and to encourage friends and family to dig deep by making a contribution to the Trust. You can also make a donation through the on-line donate button on our web site or by simply sending a cheque to the office in Kilcuan.

This summer saw some changes at the office and to the Board of Trustees. Firstly a very big thank you to Pat Jordan who stepped down as manager of Kilcuan after a period of 12 years looking after the property but more importantly looking after everyone who came to visit. He has not left us completely as he will still be involved with the cycle and will travel to Lourdes next year to help out. Thank you Pat from all in IHCPT. This summer also saw the departure from the Board of Trustees of Mary Wade, Lourda McGowan and Fr. Richard Scriven. Like Pat they have not quite left "home" so watch out for sightings of them in Kilrane or Lourdes. I honestly cannot say enough about the dedication and commitment each of them gave to the Trust over the past fifteen years, they are an inspiration to all of us as to what it means to be giving and not receiving, completely selflessly. Thank you Mary, Lourda and Richard from all in IHCPT.

Best wishes to the new Group Leaders and to all involved with the Trust, I'm sure it won't be long before we are packing our bags and heading off for our 40th pilgrimage to Lourdes 2011.

*Rise & Shine
John O'Reilly September 2010*

IHCPT The Irish Pilgrimage Trust

IHCPT-The Irish Pilgrimage Trust
Kilcuan, Clarenbridge, Co Galway

Tel: 091 796622

Fax: 091 796916

Email: info@irishpilgrimagetrust.com

Web: www.irishpilgrimagetrust.com

Online Video Appeal:

www.mediaconcepts.ie/ihcptappeal

Chairperson: John O'Reilly

Email: joreilly05@gmail.com

National Co-ordinator: Bernadette O'Connell

Email: boconnell@irishpilgrimagetrust.com

Kilcuan Manager: James McHugh

Email: jmchugh@irishpilgrimagetrust.com

Administrator: Maureen O'Loan

Email: moloan@irishpilgrimagetrust.com

Administrator: Zoe O'Dea

Email: zodea@irishpilgrimagetrust.com

Board Members

Fr Michael McGrath	Trust Chaplain
Mary Clancy	Honorary Secretary Deputy Protection Officer
Liam Ahern	Liturgies Co-ordinator Hosanna House Challenging Behaviour
Dr Bridget Keane	Trust Doctor Family Group Selection
Teresa Lee	Trust Nurse Risk Assessment
Gabriel Higgins	Protection Officer Merchandise Jet Set
Damian McNicholl	PRO Regional Chairs Co-ordinator
Denis McCarthy	Insurance Merchandise

Charity No 5992

NEW! NEW! NEW! NEW! ON - LINE DONATION

logon to

www.mediaconcepts.ie/ihcptappeal

You are invited to help the work of the Trust
through this on-line appeal.

Please send the link to your friends.

Trust Talk... We've gone Digital

From now on, we will distribute the newsletter by email and it will also be available to read or download on our website. If you would like us to email a copy to you of our next newsletter, **please complete the slip below and return to us.**

If you do not or you know someone in the IHCPT family who does not have an email address or access to our website and would like to continue receiving a newsletter by post, **please complete the slip and return it to us.**

Please detach, complete and return it to us at The Irish Pilgrimage Trust, Kilcuan, Clarenbridge, Co Galway

I would like to receive a copy of Trust Talk BY POST:

Name:

Postal Address:

I would like to receive a copy of Trust Talk BY EMAIL:

OR

My email address is:

or email: info@irishpilgrimagetrust.com

APPLICATION FORM

APPLICATION FOR OUR 2011 PILGRIMAGE

Now is the time to send in applications for our pilgrimage next Easter. Over the years the Trust has developed different types of groups each geared to meet the special needs of the young people. All groups have a Group Leader, group nurse and chaplain. Each group is assigned a doctor. All activities are done together as a group. Each group numbers about twenty-two young people and carers.

IHCPT - The Irish Pilgrimage Trust welcomes applications from young people of any religious, ethnic or racial background. For our 2011 Pilgrimage we shall have:

Groups for young people with a physical disability, aged 9 to 18.

Groups for young people with an intellectual disability, aged 11 to 21.

Three Family Groups, for very seriously ill children under the age of 9.

These children must be accompanied by a parent. The carers involved with these groups have skills to look after very sick children and to work with family members.

Two Jet Set groups for young adults, aged 20-25, with an illness or a physical disability.

Three Jet Set groups for adults with an intellectual disability, aged 21-30.

These groups prepare their own pilgrimage programme.

We regret that we cannot consider any young person who has been on an IHCPT pilgrimage on or after 2007. Any young person who has been to Lourdes with another organisation or pilgrimage is welcome to apply.

Application forms have already been sent to schools, organisations, institutions and individual contacts all over Ireland. You can also get an Application Form from our office.

IHCPT - The Irish Pilgrimage Trust
Kilcuan
Clarenbridge
Co Galway

Tel: 091-796622 Fax: 091-796916
Email: info@ihcpt.com

CODE OF PRACTICE

A new edition of Code of Practice of the Trust has been prepared. This important document is a summary of our protocols and reflects best practice for organisations that work with young people. A copy of the CODE OF PRACTICE can be had from our office in Kilcuan or downloaded from our website: www.irishpilgrimage.com

The closing date for completed applications is 31 October, 2010.
Please Note: Completion of an Application Form does not guarantee selection.

An Invitation To You

THE IRISH PILGRIMAGE TRUST SUPPORTERS CLUB

October 2010

Dear Friend of The Trust,

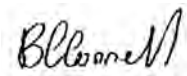
I am taking this opportunity to write to you on behalf of the Trust.

The Trust thankfully is strong and vibrant and continuing to grow and prosper. We have more people than ever wishing to travel to Lourdes with us at Easter time and Hosanna House in June, both carers and guests. Our house at Kilcuan is a great facility for both The Trust and other caring organisations providing a great holiday spot for our guests and respite for their families and carers. We are now about to embark on a new holiday home located at Kilrane in Wexford, near Rosslare Harbour. This house will be available to groups of up to 18 people or families for holidays. All these developments can be reviewed on our website. www.irishpilgrimagestrust.com

One of our greatest challenges each year is the dreaded fundraising and in the current times, we believe that this will get more difficult. Also our costs of getting to Lourdes are increasing faster due to increases in fuel prices. Traditionally, most of the fundraising as you know has been done by the groups and this is now more difficult than ever. In an effort to share this responsibility, we are asking the wider Trust Family to get involved. This can be done either passively or actively. We attach a standing order form for anyone who might wish to make a donation monthly or annually. Any annual payment of over €250 is eligible for a tax refund to The Irish Pilgrimage Trust. Alternatively, if anyone wishes to get involved, you can contact HQ, any regional officer or group leader in your area. Names and contact details can be got from us in Kilcuan.

Many thanks for taking the time to read this letter.

Yours sincerely,



Bernadette O'Connell,
National Co-ordinator

Please fill in all the details below to help us keep our records accurate and return the form to:

National Coordinator, Irish Pilgrimage Trust, Kilcuan, Clarinbridge, Co. Galway.

Name: Group Number:
(If applicable)

Home address:

Telephone: (Home/Work)

Please include me/us on the mailing list to receive a copy of the IHCPT newsletter.
Yes/No

I/we would like to make the following contribution to the **IRISH PILGRIMAGE TRUST** fund raising

By pledging to pay €..... monthly/annually. Please circle as appropriate

I/we have enclosed an annual cheque for the draw: €.....

I/we have completed the attached Banker's Order

Monthly Contributions	Annual Contribution	
€5.00	€60	Eligible for Tax Refund to The Trust.
€10.00	€120	<i>Any annual payment in excess of €250, see covering letter. Please complete the top of this form and return to Kilcuan.</i>
€25.00	€300	
Other: €	Other: €	

The section below should be completed and given to your Bank.

BANKERS ORDER

To: The Manager,

Bank: Branch:

I/we authorise you to debit my/our account number:

With the sum of EUR.....

For the credit of Irish Pilgrimage Trust **ACCOUNT NO: 41444-561**
Allied Irish Banks, Lynch's Castle, Galway. Sort Code: 93-70-96

Please charge these payments to my/our account monthly/annually commencing with a payment on the 1st..... 20... Please do not charge my/our account any fees as the IHCPT is a Revenue approved "Eligible Charity" number CHY5992.

Account Name:

Authorised Signature(s)

Date:

This cancels all previous standing orders in favour of IHCPT – The Irish Pilgrimage Trust.

To Lourdes *au vélo*



Since 1982 IHCPT a special 'brand' of pilgrim has travelled to Lourdes overland on bicycle or *au vélo* as the natives say! *Allez! Allez!* has greeted these dedicated pilgrims as they have journeyed through the French countryside for over 30 years, southward bound through hill and dale, through vineyard and by coastline, through sleepy villages and bustling cities. The sponsored cycle takes place every two years... here is a flavour of 2010 and maybe it might prompt you to take to the roads and be part of this fantastic pilgrimage.

Cycle 2010 was launched in Lourdes at Easter 2009 and eventually after a year's planning and four practice cycles and meetings 146 participants, (131 Cyclists and 13 backup crew) departed Shannon Airport for Dinard on Saturday 27th March last. Three of the Back-up crew and one Cyclist had already departed with the bikes and catering equipment.

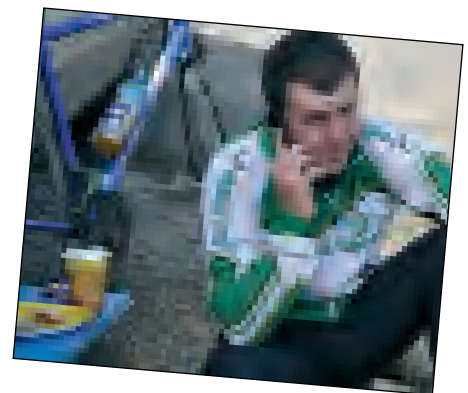


Three Cyclists and 2 backup Crew made their way from the UK to Dinard. The total number was 153 participants, 135 Cyclists and 18 Back-up Crew. When the Cyclist's arrived in Dinard their bikes were all ready for them to commence cycling without delay.

The weather for the most part was favourable except for day 4 (La Rochelle to Royon) when strong gale force winds forced the termination of the cycle at the half way mark; safety is paramount.

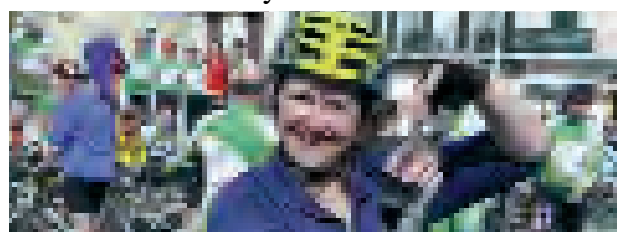


The arrival in Lourdes was quite moving. All 153 Cyclists and Backup congregated in The Square in Lourdes and then cycled down to St Michael's Gate where the usual



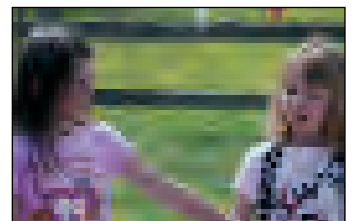
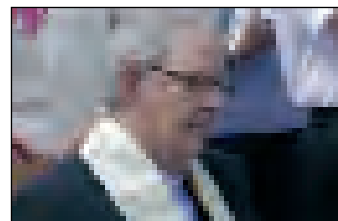
group photo was taken and without doubt prayers of thanksgiving for the completion of another successful Cycle. Roll on 2012!

Don't forget the reunion in Kilashee House, Naas, Co Kildare on November 13, 2010.



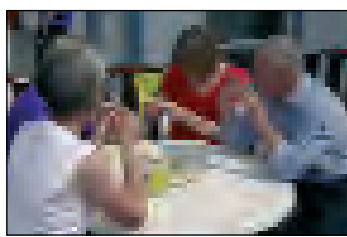
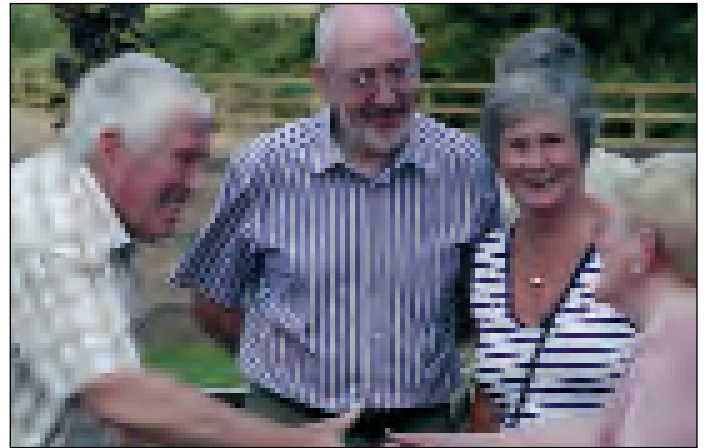
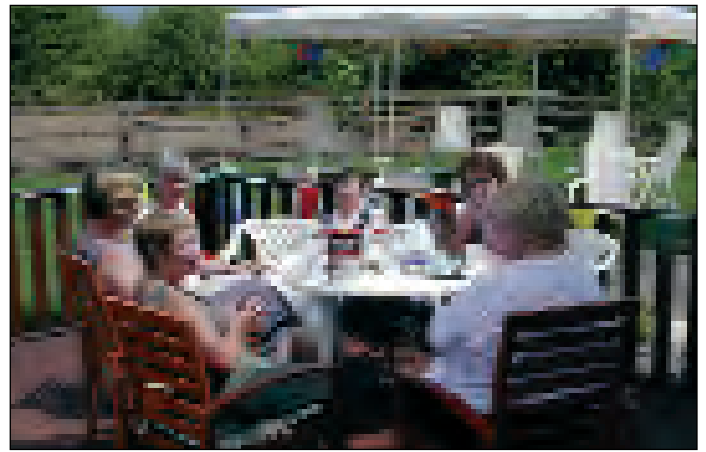
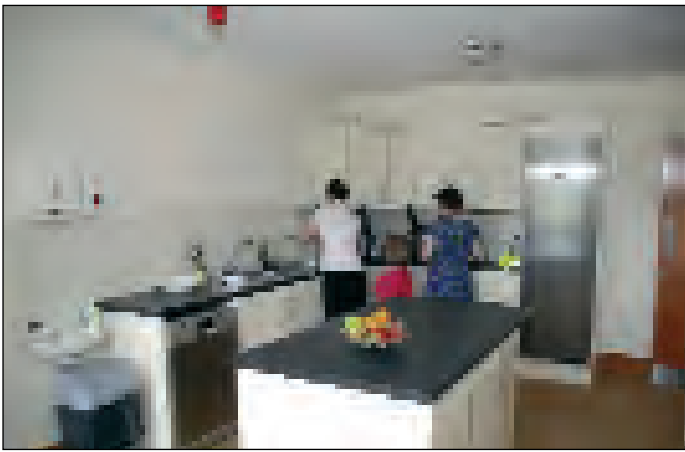
Kilrane is Open

In a glorious day of sunshine our new house in Kilrane was opened in June. Members of IHCPT from north, south, east and west gathered to celebrate the newest part of the work of IHCPT in Ireland. A statement of faith in these difficult financial days the wonderful new facility was blessed by Bishop Denis Brennan of Ferns and a wonderful day of celebration was had by all. We mark this great day in this edition of the newsletter and suggest that if your are in the sunny south east, drop in to say hello and see the wonderful new facility that is now Kilrane.



Top: The large crowd gathered in wonderful sunshine for the opening and blessing of Kilrane. Middle right: Bishop Brennan is welcomed to Kilrane. Left and below: Part of the large crowd who enjoyed the sun shine in the Sunny South East





Top left: The wonderful kitchen facility. Top right: A deck bedecked in sunshine. Middle left: Bishop Brennan and Bishop Dermot after cutting the ribbon. Middle right: Mickey Fleming (129), James McHugh (Kilcuan), Catherine Breen (203) and Marie Therese Connolly (203). Bottom left: James O'Callaghan and Mickey Fleming (129). Bottom right: Refreshments at the end of the day.

Hands build the Kingdom



Christ has no body now but yours,
 No hands, no feet on earth but yours,
 Yours are the eyes with which he looks
 Compassion on this world.
 Yours are the feet with which
 he walks to do good.
 Yours are the hands, with which he
 blesses all the world.
 Yours are the hands, yours are the feet,
 Yours are the eyes, you are his body.
 Christ has no body now but ours.

St Teresa of Avila

On Saturday 26th June this year, 200 people gathered at our new holiday home in Kilrane, just outside Rosslare Harbour county Wexford for the official opening. John thanked Bishop Brennan for blessing the new home and praised the hard work and dedication of those in the South East to get the house looking so lovely for the official opening. It was a beautiful sunny day and the house was looking its best after a lot of hard work by the local committee – Mary Wade, Deirdre Franey, Pauline Franey, Maureen Rossiter, James White, Fr Brian Whelan and Helen Kirwan. Many other volunteers from the region helped out with the opening.

Bishop Brennan performed the official opening ably assisted by Sean, David and Caroline and Chairman John O'Reilly and Treasurer James White also spoke on the day. Current and past Trustees, group leaders and

volunteers as well as many supporters from the South East region attended the opening.

The holiday home is located a short distance from the village of Kilrane, just a few miles from Rosslare Harbour beside St Helen's Golf club. There is a lovely beach a short walk from the house and golf is available at the 18-hole St Helen's Golf Club across the road.

The house sleeps 17 people with 4 triple bedrooms, 2 twin rooms and 1 single. 6 bedrooms are *en suite* and there is a main bathroom downstairs.

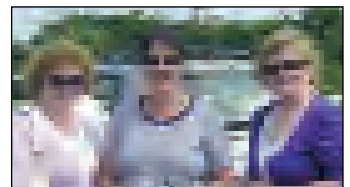
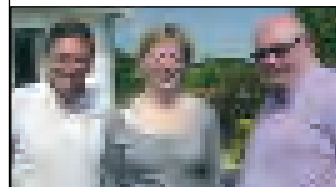
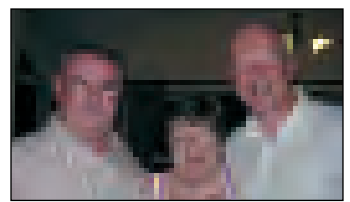
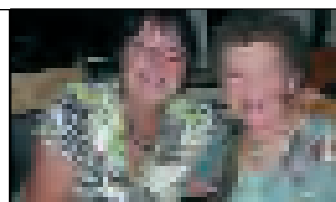
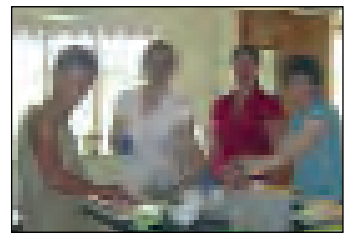
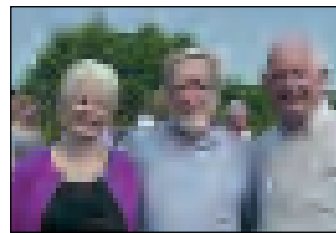
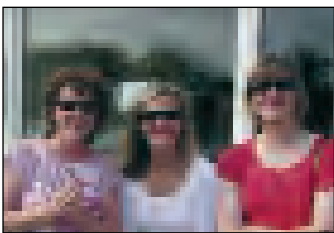
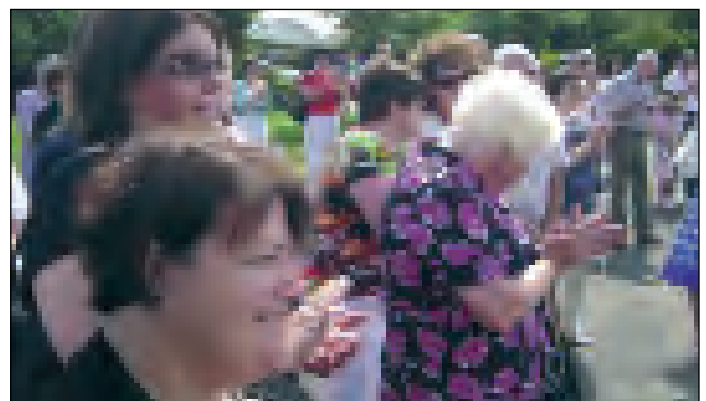
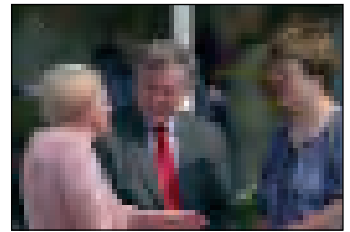
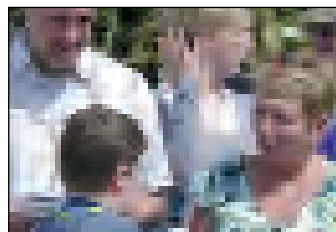
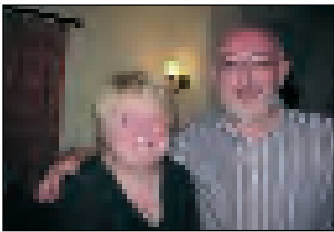
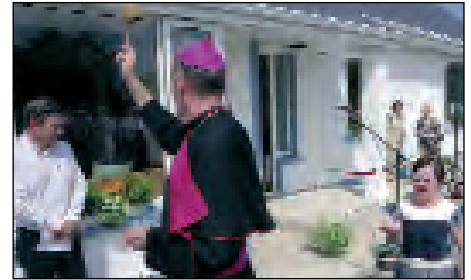
There is a fully fitted kitchen with a dishwasher, microwave and an extensive range of utensils and cooking facilities. The utility room has a washing machine and drier.

There is a large dining area off the kitchen

that leads to a sunny deck in the secluded area at the back of the holiday home. In the large, bright comfortable lounge area there is a television and a DVD player.

There is secure parking available at the front of the house and a gate at the entrance to the house.

At the back of the house there is a large safe, grassy play area and the house is situated in a very quiet place.



FRIENDSHIP WEEK KILRANE 2010



The first week in August was an exciting time in our new holiday home in Kilrane. The first ever Friendship Week took place in the house. Carers from Group 94 based in Enniscorthy came together along with some students from a local secondary school to bring 9 young people with learning disabilities on holiday to the new house. Eight of the young people came from St Patrick's Special School in Enniscorthy and one young person came all the way from Galway. The young people were mostly youngsters who have never been to Lourdes some of whom refuse to fly so will never get the chance to come to Lourdes.

The week began with welcoming the cyclists who were raising funds for the house on the Tour of Wexford Cycle. The young people were delighted to see the cyclists. Sunday evening set a Lourdes theme to the week when chaplain to group 94 Fr Tom Dalton came and celebrated Mass with us. We finished with a resounding Rise and Shine and it was very uplifting to see the house full of song and joy. The rest of the week continued with daily trips to the beach, which is only a 10 minute walk from the house past the golf club. Of course thankfully the sun shone on us for the week as it always does in the Sunny South East!

On three occasions during the week we set off in the mini bus to visit areas of local interest. Kennedy Park with its picnic area, walks, playground and miniature train was a big hit. For those of us familiar with Lourdes it was just like the Wednesday day trip. We also befriended the animals at the new Open Farm in Blackwater where we also enjoyed the playground and a lovely lunch. Our Lady's Island is close to Kilrane and we decided we would visit this holy place but the ice cream was far more important than the prayers! On our final night of the week we had a barbecue and we were joined by some local Trust helpers. All in all we had a wonderful week which we captured on dvd and some parents tell me that they know the dvd contents off by heart and that it is already nearly worn out! The young people have



been regaling their teachers back in school with stories of their holiday and asking when they can go again! A good sign don't you think!

We hope that many more members of the Trust will enjoy the wonderful facilities in the house and surrounding area in the years to come. Our thanks to everyone who made the week such a

Family Group Comes of Age



During the 1980's there was a growing awareness that there were very many young ill children the Trust could not accommodate in the regular groups. A group of very young children accompanied by a parent/parents and in some cases siblings together with carers was formed.

One of the regular Western region group – 113 – was chosen to be the new Family Group and travelled to Lourdes for the first time in 1990. At that time Group 113 covered the whole country from Donegal to Wexford and Belfast to Kerry. Over the next eight years as the num-

bers grew, two more groups were formed. Group 145 based in the East formed in 1994 and group 103 based in the North formed in 1998. Group 113 continued in the West of the country.

2010 marks the 21st Pilgrimage involving Family Groups. To celebrate this wonderful achievement a reunion/remembrance day was organised for August 21st at Kilcuan. Members of the three groups attended and travelled from all parts of the country. Fr Sean Neylon, chaplain to group 113 since its incep-

tion, celebrated Mass in the Oratory. During the ceremony, he lit a candle bearing the names of all children and parents who have died since travelling with the groups to Lourdes. After mass a lovely Mountain Ash tree was planted in the garden in their memory. This was a very moving occasion with many parents who had lost children taking part.

A buffet lunch was enjoyed by all. Photographs dating back 21 years were scrutinized. A rousing rendition of "Rise and Shine" was of course part of a wonderful celebration!



A lovely Mountain Ash tree was planted in the garden in their memory. This was a very moving occasion with many parents who had lost children taking part.



FUNDRAISING - A year long task!



Sunday 27th September saw the first 'Tractor Run' organised by Group 93. On a bright, sunny afternoon, almost 3 tractors - vintage and modern - set from the Saval Sports and Leisure Complex, for a leisurely drive round the highways and byways of Saval Parish. Returning to the sports hall they were treated to tea and sandwiches by Anne Lennon (Group 93) and her daughter Katrina (Group 67), Gráinne Digney (Group 67) provided good craic to all gathered. An enjoyable afternoon was had by all and group 93 fundraising benefited by some €650. Many thanks to all who took part.



Children from Clarenbridge National School gathered together toys and sold them at the market in Clarenbridge. They presented Bernadette O'Connell with a cheque for €477 for Kilcuan. Many thanks to one and all.



Check out our website to see how you can help the work of IHCPT
www.irishpilgrimagestrust.com

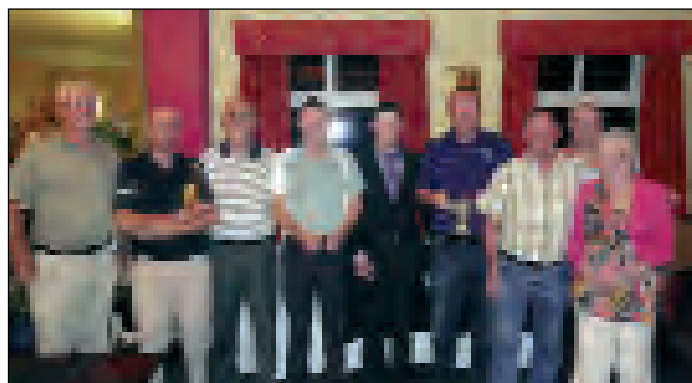
You Too Can Help



Buy a Brick

You are invited to buy a brick and have a loved one remembered in our building in Kilrane. Each brick costs €10 and names will be remembered on our Lourdes pilgrimages and entered into a special memorial book at Kilrane.

More information from HQ: see page three for details.



Above are the organisers and winners of the annual golf classic organised by Group 173. A great days golf yielded over €3000 for IHCPT. Below Conal McShane is presented with the proceeds of the annual sale at Glenswilly National School. The 5th and 6th classes raised €724.20 for the work of Group 173. Well done to all.



Trustees and Former Trustees Gather in Kilrane

In June 2010 former trustees gathered in Kilrane to meet and catch up. A regular occurrence over the past decade the trustees gathered and enjoyed in the South East and were introduced to the newest aspect of the work of IHCPT - our new house in the Sunny South East. A great day was had by all: mass was celebrated by Bishop Dermot and over a lovely evening meal stories were exchanged and friendships rekindled.

On this occasion also the work and dedication of retiring trustees was marked. Gerry Martin's 10 years and Mary Wade and Lourda McGowan's 15 years as trustees were marked by a presentation by John O'Reilly, Chairperson of the Trust, on behalf of all. Bishop Dermot O'Mahony also received a gift from the Trust marking his years as President.

The work of Pat Jordan was recognised by the Trustees. Pat who has had a long association with the Trust through the biennial cycle was also the manager of Kilcuan for over 12 years.

The night recognised over 75 years of dedication and commitment to IHCPT and John O'Reilly thanked them all on behalf of the countless number of volunteers and pilgrims who had enjoyed their friendship and benefited from their generosity over the years.



LOURDES 2010

The Theme for Lourdes 2010 was *With Bernadette let us make the sign of the Cross.*

Our planes landed in Lourdes on Sunday 4th April and started off another great week in Lourdes. The sun shone through the week and all groups enjoyed spending a lot of time outdoors. The office and shop moved to the Hemicycle this year and all groups called in there during the course of the week.

Bishop Tony Farquhar, auxiliary bishop of Down and Connor, joined our Pilgrimage this year and celebrated the Irish Mass

on Tuesday with the priests of The Trust. This was Bishop Tony's third time coming on Pilgrimage with IHCPT.

Preparations for Lourdes 2011 are already underway, this will be the 40th anniversary of the Trust and the Trust Mass will be celebrated on Thursday morning by The Irish Pilgrimage Trust. The Theme for 2011 will be *Praying with Bernadette.* We look forward to a wonderful year of celebration, great fun, lots of prayers and many blessing for all of us.

By Pattie O'Boyle; mother of twins Conor and David travelled to Lourdes in 2010 with Group 113. She gives an account of her week...

During the week I was often asked to describe the experience of bringing up two little boys with Autism; to try and help people understand it, to imagine how it would feel. It's like this...

When you're first told you're going to have identical twins, it's like planning a fabulous holiday to Italy. You buy a bunch of guidebooks and make wonderful plans...the gondolas in Venice, the vineyards in Tuscany, Michaelangelo's David. You may learn some handy phrases in Italian. It's all very exciting. After months of eager preparation, the day finally arrives. You pack your bags and off you go. Several hours later, the plane lands. The stewardess comes in and says 'Welcome to Holland'.

'Holland???' you say. 'What do you mean Holland? I signed up for Italy! I'm supposed to be in Italy. All my life I've dreamed of going to Italy.'

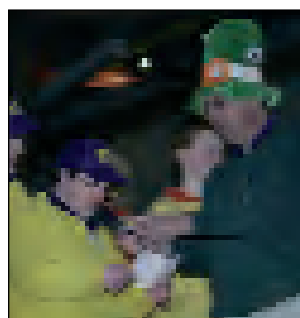
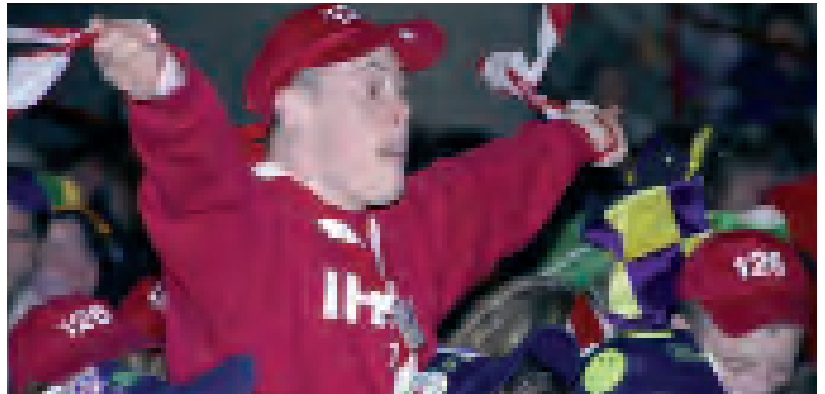
But there has been a change in the flight plan. They have landed in Holland and there you must stay. The important thing is that they haven't taken you to a horrible, disgusting, filthy place; full of pestilence, famine and disease. It's just a different place.

So you must go out now and buy new guidebooks; and you must use a whole new language; and you will meet a whole new group of people you would never have met. But it's not that bad. It's just a different place. It's slower-paced than Italy, less flashy than Italy. But after you've been there for a while and you catch your breath, you look around and you begin to notice that Holland has windmills, Holland has tulips, Holland even has Rembrandts.

But everyone you know is busy coming and going from Italy and they are all chatting about what a wonderful time they had there. And for the rest of your life, you will say

'Yes, that's where I was supposed to go, that's what I had planned'.

But if you spend your life mourning the fact that you didn't get to Italy, you may never be free to enjoy the very special, the very lovely things about Holland.



FESTIVE PICTURE TO COLOUR



CHRISTMAS CARDS 2010

Christmas cards are a very important source of advertising and income for IHCPT. Our range is simple and uncomplicated and we hope that they will serve you well this year as you send greetings at Christmas. Thank you for your donations and your purchase. It makes a huge difference.



Number of Packs required	Ref	Title of Card	Cost Excluding Postage	Total Including Postage
	A	Christmas Snowman €5.00 per pack	€	
	B	Shepherd and Kings €5.00 per pack	€	
	C	Traditional Christmas €5.00 per pack	€	
Postage and Packing Prices (Republic of Ireland and Northern Ireland) For 1 pack add €1.35 For 2-3 packs add €3.85 For 4-6 packs add €6.00 For 7-12 packs add €7.50 Other costs on request			Purchase total	
In the case that your choice is not available please indicate what other option, in order of preference, should we forward from the above selection			Postage	
<input type="checkbox"/> <input type="checkbox"/>			Donation	
Limited stock of some designs Assorted designs may vary from pack to pack			Total:	

IHCPT
 The Irish Pilgrimage Trust
 Kilcuan
 Clarenbridge
 Co. Galway
 Tel. (091) 796622
 Fax (091) 796916

Please use BLOCK CAPITALS

NAME _____

ADDRESS _____

POSTAL CODE _____

Please send this order form together with completed label and payment to Kilcuan